

REFLECTIONS

INTRO

$\text{♩} = 80$

(CUP)

4

A

B

(OPEN)

8

C

D

E

DOUBLE TIME

4

F

REFLECTIONS

2

G

Two staves of musical notation. The first staff (Measure G) contains a sequence of eighth and quarter notes with accents. The second staff (Measure H) contains a sequence of quarter and eighth notes with accents.

H

Measure I: A single staff with a fermata over the first measure, followed by a sequence of quarter and eighth notes. A '5' is written above the staff.

I

Two staves of musical notation. The first staff (Measure J) features a long melodic line with slurs. The second staff (Measure K) continues with slurs and accents.

J

IN ONE

d = d

(CUP)

5

K

d = d

7

Four staves of musical notation. Measures L, M, and N contain fermatas with '3', '4', and '3' above them respectively. Measure O contains a sequence of notes with slurs.

L

8

M

9

N

8

Four staves of musical notation, each containing a fermata.

O

(CUP)

Measure P: A single staff with a sequence of notes and slurs.

mf

Measure Q: A single staff with a sequence of notes and slurs.

REFLECTIONS

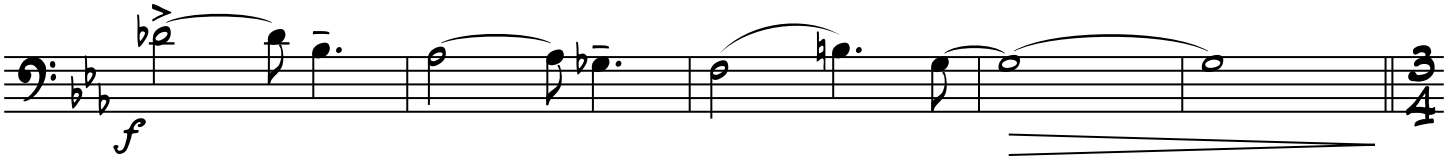
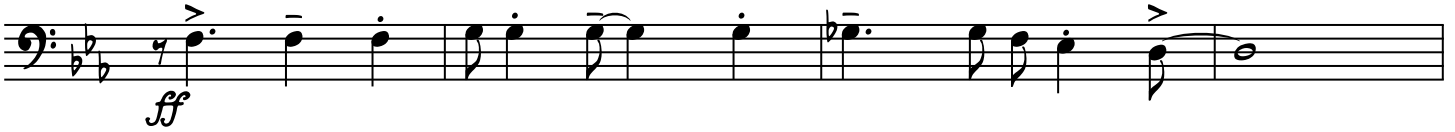
P

(OPEN)

8



Q



R

(CUP)

13

ON CUE

