

REFLECTIONS

INTRO

$\text{♩} = 80$

Musical notation for the Intro section, featuring a 3/4 time signature and a drum set staff with various rhythmic patterns.

A

Musical notation for section A, featuring a drum set staff with a consistent rhythmic pattern.

B

Musical notation for section B, featuring a drum set staff with a consistent rhythmic pattern.

C

Musical notation for section C, featuring a drum set staff with a consistent rhythmic pattern.

D

Musical notation for section D, featuring a drum set staff with a consistent rhythmic pattern.

E **DOUBLE TIME** **PLAY TIME**

Musical notation for section E, featuring a 4/4 time signature and a drum set staff with a consistent rhythmic pattern.

A blank drum set staff with a slash through it, indicating a section where the drummer is to play freely.

F

Musical notation for section F, featuring a drum set staff with a consistent rhythmic pattern.

A musical staff with a treble clef and a key signature of one sharp (F#). The notation consists of rhythmic patterns: quarter notes, eighth notes, and rests, with slanted lines indicating a specific playing technique.

G

A musical staff with a treble clef and a key signature of one sharp (F#). The notation includes quarter notes, eighth notes, and rests, with slanted lines indicating a specific playing technique.

A musical staff with a treble clef and a key signature of one sharp (F#). The notation includes quarter notes, eighth notes, and rests, with slanted lines indicating a specific playing technique.

H

A musical staff with a treble clef and a key signature of one sharp (F#). The notation includes quarter notes, eighth notes, and rests, with slanted lines indicating a specific playing technique.

A musical staff with a treble clef and a key signature of one sharp (F#). The notation includes quarter notes, eighth notes, and rests, with slanted lines indicating a specific playing technique.

I

A musical staff with a treble clef and a key signature of one sharp (F#). The notation includes quarter notes, eighth notes, and rests, with slanted lines indicating a specific playing technique.

A musical staff with a treble clef and a key signature of one sharp (F#). The notation includes quarter notes, eighth notes, and rests, with slanted lines indicating a specific playing technique. The piece concludes with a double bar line and a 3/4 time signature.

J IN ONE
d = d

A musical staff with a treble clef and a key signature of one sharp (F#). The notation includes quarter notes, eighth notes, and rests, with slanted lines indicating a specific playing technique. The piece concludes with a double bar line and a 3/4 time signature.

K d = d
PLAY TIME

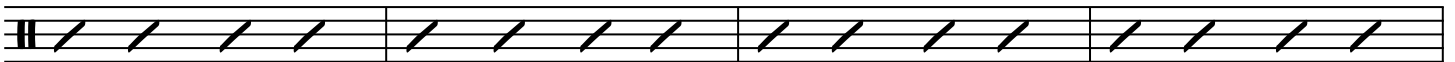
A musical staff with a treble clef and a key signature of one sharp (F#). The notation includes quarter notes, eighth notes, and rests, with slanted lines indicating a specific playing technique. The piece concludes with a double bar line and a 3/4 time signature.



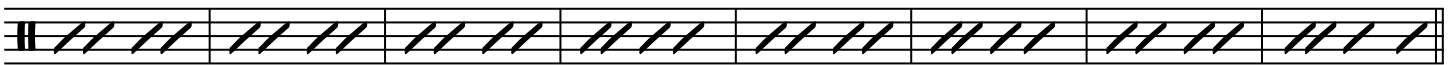
L



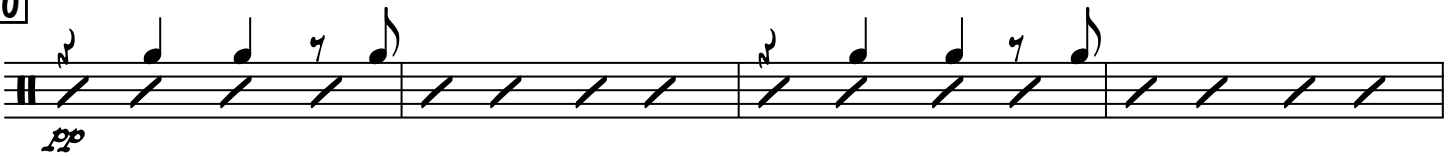
M



N



O



P



4
Q

REFLECTIONS

R