

# REFLECTIONS

**INTRO**

$\text{♩} = 80$

Musical notation for the Intro section, 3/4 time signature. It begins with a *mf* dynamic marking. The melody consists of eighth and quarter notes, including a triplet of eighth notes. The piece concludes with a fermata over a half note.

**A** **B**

Musical notation for section A and B, 3/4 time signature. Section A is a quarter rest followed by a fermata. Section B begins with a *f* dynamic marking and features a sequence of eighth and quarter notes with various accidentals.

**C**

Musical notation for section C, 3/4 time signature. It consists of a single eighth note followed by a fermata.

**D**

Musical notation for section D, 3/4 time signature. It begins with a *f* dynamic marking and features a sequence of eighth and quarter notes with various accidentals.

**E** DOUBLE TIME

Musical notation for section E, 4/4 time signature, labeled as "DOUBLE TIME". It features a sequence of quarter and half notes.

**F**

Musical notation for section F, 3/4 time signature. It begins with a triplet of eighth notes, followed by a sequence of eighth and quarter notes with various accidentals.

**G**

Musical notation for section G, 3/4 time signature, consisting of two staves of eighth and quarter notes with various accidentals.

REFLECTIONS

2

H

Two staves of musical notation for section H. The first staff contains measures 1 and 2, featuring a melodic line with eighth and sixteenth notes, including accents and slurs. The second staff continues the melody with a slur over measures 1 and 2.

I

Two staves of musical notation for section I. The first staff contains measures 1 and 2, with a melodic line and a slur. The second staff continues the melody, ending with a 3/4 time signature change.

J IN ONE

*d = d.*

5

K

*d = d*

8

8

Two staves of musical notation for section J and K. The first staff shows a 3/4 time signature, followed by a measure with a fermata and the number 5. The second staff shows a 4/4 time signature, followed by a measure with a fermata and the number 8, and another measure with a fermata and the number 8.

L

Two staves of musical notation for section L. The first staff starts with a *mf* dynamic marking and contains measures 1 and 2. The second staff continues the melody with a slur over measures 1 and 2.

M

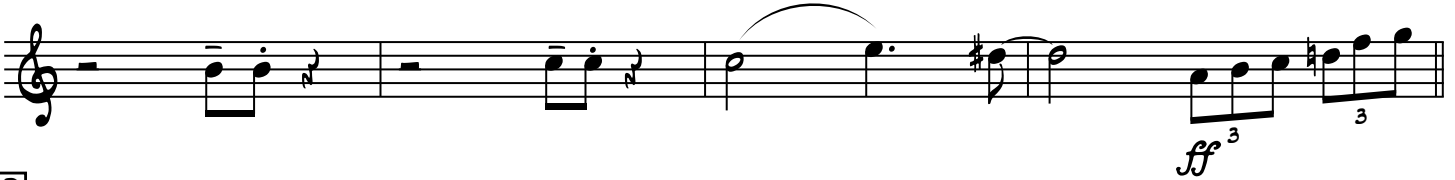
Two staves of musical notation for section M. The first staff starts with a *mp* dynamic marking and contains measures 1 and 2, featuring a long slur. The second staff continues the melody with a slur over measures 1 and 2.

**N**

8



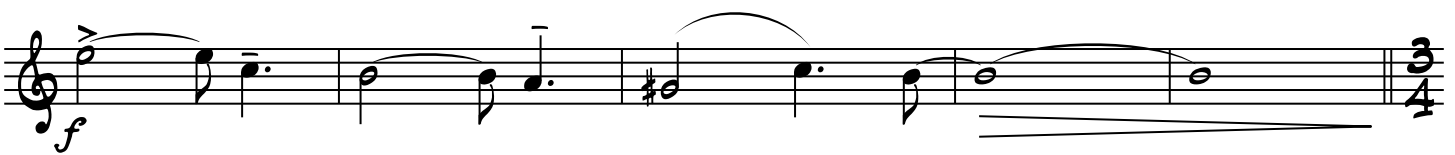
**O**



**P**



**Q**



**R**

13

ON CUE

