

REFLECTIONS

INTRO

$\text{♩} = 80$



A



B



C



D



E

DOUBLE TIME
C-7
WALK

E^b7(13)

D-7(^b5)(11)

G⁷(^b9)

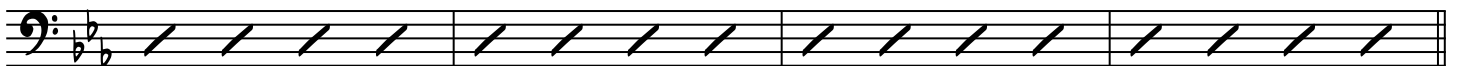


C-7(9)

B^b7

A^b7

G⁷(#9)



2
F

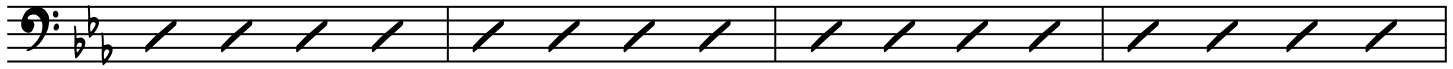
C-7(9)

F-7

REFLECTIONS

A^b-7(9)

D^b-7

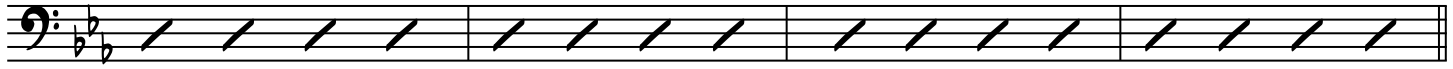


D^b7(♯11)

C-7

G^b7(13)

F7(13)



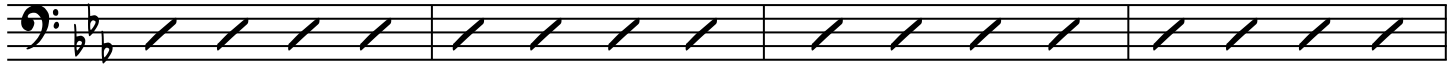
G

B^b7

A-7

A^bMAJ7(♯11)

G7(♭13)



C-7(11)

F-7

A-7(♭5)(11)

D7(♭9)



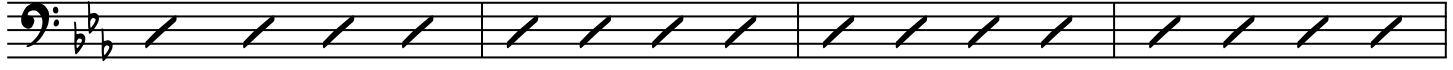
H

G-7

A^bMAJ7

B^b7

A-7

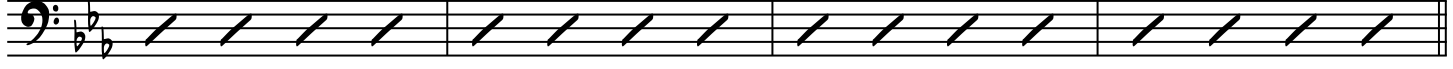


D7(♭9)

G-7

F-7

E-7



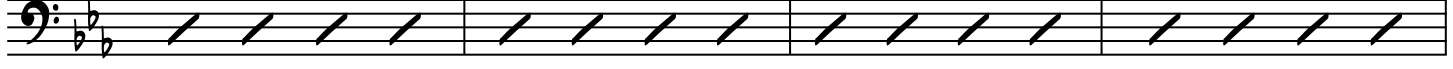
I

B^b7

A-7(♭5)(11)

A^b7(13)

G-7

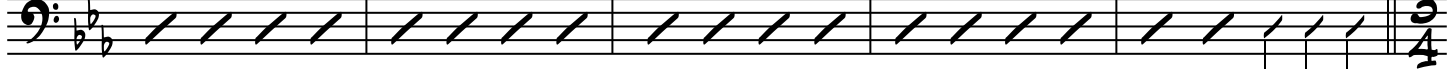


F^b7(13)

D-7(♭5)(11)

G7(♭13)

C-7



J

IN ONE

C-7

A^bMAJ7(♯11)

D-7(♭5)(11)

G7(♯9)

d = d.

WALK



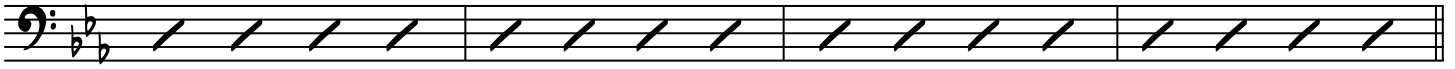
REFLECTIONS

3

K $d = d$ C-7(9) F-7 A^b-7(9) D^b-7



D^b7(#11) C-7 G^b7(13) F⁷(13)



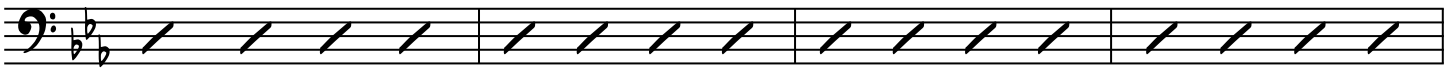
B^b7 A-7 A^bMAJ7(#11) G⁷(b13)



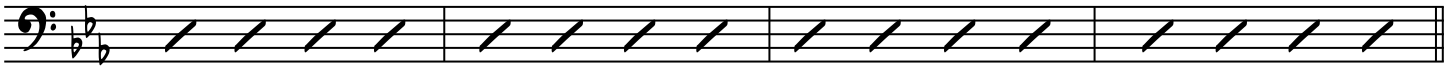
C-7(11) F-7 A-7(b5)(11) D⁷(b9)



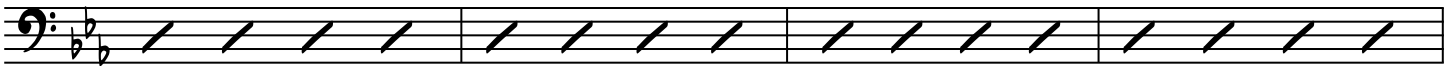
L G-7 A^bMAJ7 B^b7 A-7



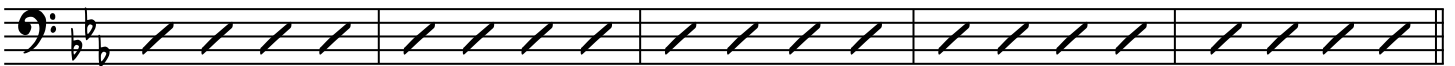
D⁷(b9) G-7 F-7 E-7



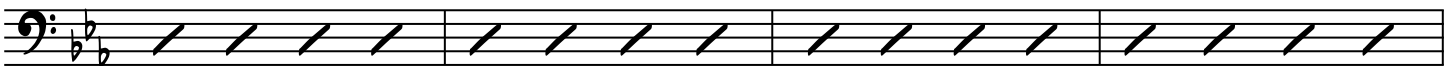
M B^b7 A-7(b5) A^b7(13) G-7



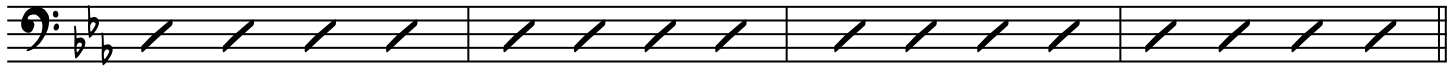
E^b7(13) D-7(b5)(11) G⁷(b13) C-7



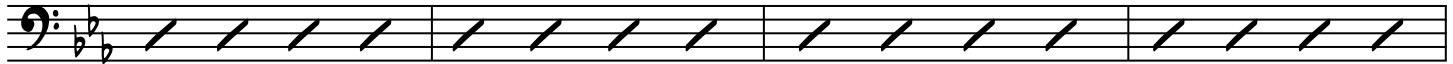
N C-7(9) F-7 A^b-7(9) D^b-7



4 REFLECTIONS
D^{b7(#11)} C-7 G^{b7(13)} F⁷⁽¹³⁾



0 B^{b7} A-7 A^bMAJ7(#11) G^{7(b13)}



pp

C-7(11) F-7 A-7(b5)(11) D^{7(b9)}

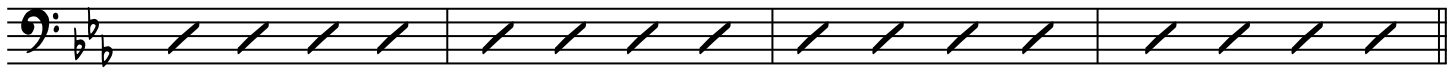


P G-7 A^bMAJ7 B^{b7} A-7

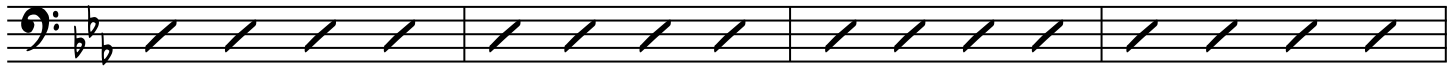


mf

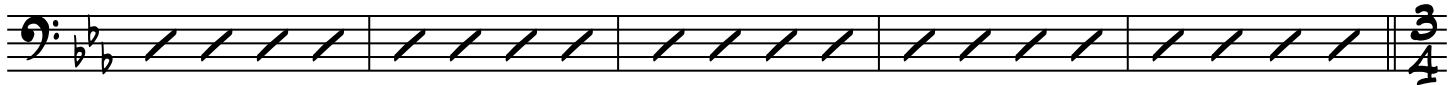
D^{7(b9)} G-7 F-7 E-7



Q B^{b7} A-7(b5) A^b7(13) G-7



E^{b7(13)} E^{b7(13)}_{SUS} D-7(b5)(11) A^{b7(13)} G^{7(b13)} D^{b7(#11/9)} C-7



3/4

R



ON CUE