

Harlem River Blues

Acoustic Bass

Timothy Lee Miller

Slow and Easy ♩ = 80

G-9 C7 G-9 D7

p

A Piano Solo - 2nd time

G-9 C7 G-9 D7 G7

3

9 C7(13) C7(13) G-9 G-9 F7 C7 G-7

p 3 3 > 3

13 D7 D7b9 C7(13) G7b9 D7alt G-9 D7

mf 3 *f* *mp*

17 G-9 C7 G-9 D7 G-7 EbΔ7 D7

3 3

B G-9 A dim7 D7b9 G-9 D-9 G7b9

3

25 C-7 C-7/Bb A dim7 D7b9 G-9 G-9/D F#7 F7 E7

3 3 *f*

29 A dim7 D7b9 C7alt G-9 C7alt A dim7 D7#9

3 *mp* *f* *mp*

C Tenor Solo - Repeat As Necessary

G-9

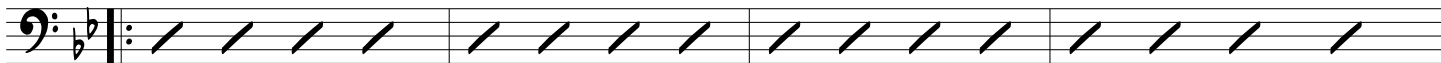
A 7alt

D 7alt

G-9

D 7alt

G 7alt



37 C 7(13)

A 7alt

D 7alt

G-9

C 7(13)

B \flat 7B \flat Δ 7

41 A 7alt

D 7b9

D 7alt

G-9

E7

A 7alt

D 7alt

2nd X

(G7alt)

**D Shout Chorus**

C-9

F7

B \flat Δ 7

G 7b9

C-9

F9

B \flat Δ 7

G 7b9



49 C-9

F7

D-7

G 7 \sharp 9

C-9

F 7(13)

B \flat Δ 7

A 7alt

**E Flute Solo**

D 7b9

C-7

G-7

F \sharp -7/AF Δ 7B \flat 7

G-9



57 A dim7

D 7b9

G-9

C 7/D

D 7alt

G-9

**F**

G-9

C7

G-9

D7

G7



65 C7(13) C7(13) G-9 G-9 F7 C7 G-7

mf *p*

69 D7 D7b9 C7(13) G7b9 D7alt G-9 D7

f *mp*

G G-9 C7 G-9 D7 G-7 EbΔ7 D7

p

77 G-9 C7 G-9 D7 G-7 EbΔ7

p

80 D7 Ab7 G-11(#13)

p